

# SST Dock

## Quick Start Guide

SST Dock | QSG | V1.1 | EN | 09-07-24



## CAUTIONS & BEST PRACTICES

- If the SST Dock appears to be damaged or is not functioning properly, please contact WatchGas or a local WatchGas distributor;
- SST Dock uses Calibration Gas to carry out testing and calibrations so always ensure that these tests are done in a well-ventilated area;
- Always ensure filters are clean and replaced on a regular basis;
- Avoid the station encountering liquids. SST Dock cannot be mounted in an outside location that could be exposed to rain or wet conditions;
- Maximum exhaust tubing length is 10 meters (30 feet);
- Always use the SST Dock in conjunction with a demand flow regulator;
- SST Dock has **no** hazardous location approvals and can only be used in a safe and non-hazardous environment known to be free of toxic and/or flammable gas;
- Servicing can only be carried out by a WatchGas office or trained service technician;
- Ensure calibration gas cylinders are the correct concentration, within their expiration date and contain gas;
- Warranty does not cover electrical surges, physical and/or water damages.



## WARNING

### IMPORTANT SAFETY INFORMATION: READ BEFORE USE

- To ensure personal safety, read Safety Information and Warnings before using the SST DOCK.
- Use the SST DOCK only as specified by the manufacturer. Failure to do so may impair protection provided by the SST DOCK. The safety and security of any system or network incorporating the SST DOCK and its accessory components is the responsibility of the assembler of the system.
- Follow all required National Electric Codes (NEC) and safety codes.
- Do not attempt to adjust, disassemble, or service the equipment.
- Only use in a well-ventilated space, in normal atmosphere, 20.9% Oxygen and non-hazardous environment.
- Only use the supplied charging adapter, 12V 1.5A.
- Do not apply positive pressure to the gas inlets. Only use a demand flow regulator.



I/P: 12 V  1.5 A

L. P. S. 

## PREPARE FOR USE

- Use only Luer PG-63 for all gas inlets/outlets.
- Tubing diameter no less than 3mm (1/8 in) internal diameter. The tubing should be suitable for the gas used, consult WatchGas for proper Last-o-more tube or compatible tube.
- Only use demand flow regulators from WatchGas compatible part list.  
**NOTE:** only connect up to 10 meter (30 feet) of tubing on the fresh air inlet and outlet.
- Ventilation – the outlet should be routed to a ventilated area.
- Adjust the fresh air purge time accordingly.
- Ensure tubing and cables are proper installed.
- Use the shortest length of tubing possible.
- Ensure fresh air inlet filter is installed.
- If potentially harmful gas is used for calibrations, users must read the MSDS of the gas connected. The SST DOCK must be attached to a venting system or be used in a well-ventilated area.

# INTRODUCTION

The SST Dock is an automated test station that allows Bump and Calibration testing. It is compatible with the full SST-Range in one module. It has the capabilities to be connected via Wi-Fi, BLE or Cellular and allows for desk, wall and hard case mounted dependent on your application. With two inlets it allows for calibration of the standard four gases plus another gas type. With built-in NFC it is easier than ever to assign gas cylinders to the correct gas in ports.

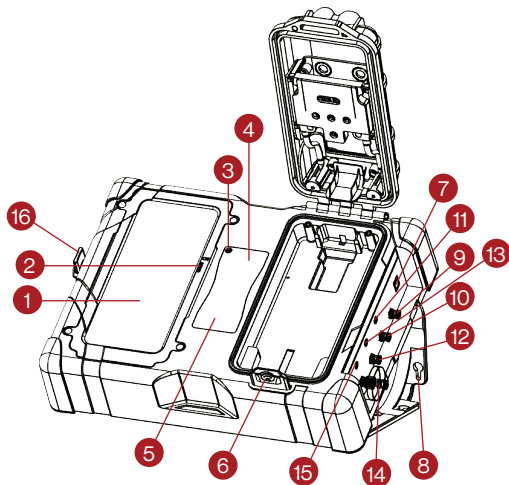


Figure 1.

## SST DOCK OVERVIEW

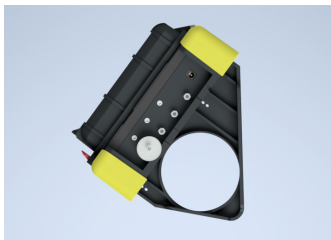
1. Touch Screen
2. Touch Screen ON/OFF
3. Status LED
4. Instruction Label
5. Bottle NFC Reader
6. Lid Lock
7. 12V Power Connection
8. Mounting Bracket
9. Exhaust Outlet
10. Gas Inlet 2
11. Gas Inlet 2 Pressure Sensor Connector
12. Gas Inlet 1
13. Gas Inlet 1 Pressure Sensor Connector
14. Fresh Air Inlet Filter
15. Fresh Air Inlet Pressure Sensor
16. On / Off Key

## MOUNTING THE SST DOCK

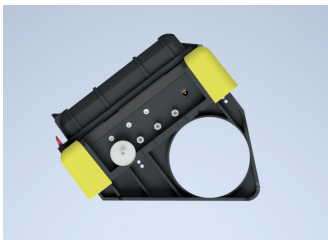
The SST DOCK can be mounted with the invertable mounting bracket in 2 different angels. Use the extended screws and plastic spacer included in the box.

### Wall mounting

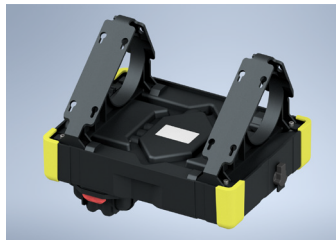
The provided mounting brackets can be used to mount the SST Dock to a wall or table. Mounting screws and plug are not provided. WatchGas recommends to check the strength of the mounting area and to select the proper mounting hardware before mounting the SST Dock. Mounting the SST Dock should be performed by a qualified installation contractor.



SST Dock on a wall



SST Dock on a table



Installing the brackets

## SWITCH ON THE SST DOCK

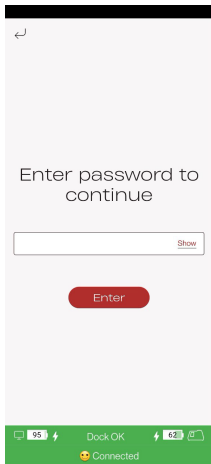
If the SST DOCK is fully discharged, please allow for 1 hour of charging prior to switching on the unit. LED will show **red** switching to **white** prior to start-up.

Connect the SST DOCK to an electrical outlet (or surge protector) by means of the included power adapter. The status light will then turn on. Use the ON / OFF key (fig 1. part 16 and part 2) to power on the touch screen.

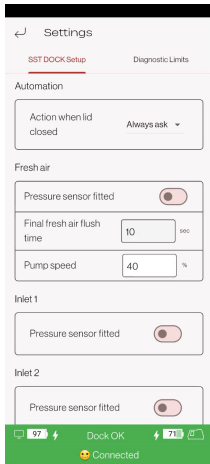
# ENTER SET UP

1. Use the password “user” or “service” to enter the setup menu.

**IMPORTANT:** If optional pressure sensors are utilized these shall be activated or the SST DOCK will ignore the signal. You can set this up in SST DOCK Setting -> Settings, with the Pressure sensor fitted option.

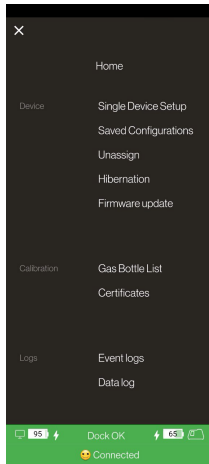


Enter the password

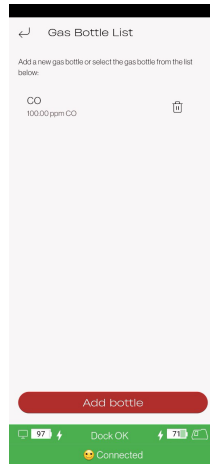


Pressure sensor fitted

2. Add calibration gas bottle in the Gas bottle list either manual or utilize Watch Tab enabled bottles. It's important to fill in all data, as the DOCK produces a full calibration certificate.

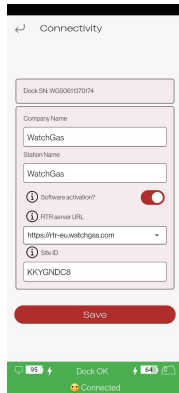
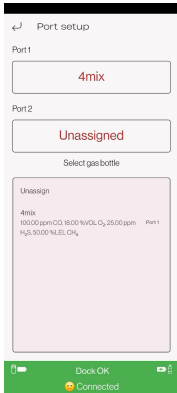


Bump & Calibration



To add a new Calibration bottle click “Add bottle”.

- Assign the gas cylinder to the input port selected (the input will light up when the port is open during operation).  
**NOTE:** The SST DOCK will not perform any bump or calibration if the gas does not match the detector target gas.
- Status LED Green normal operation and on charge / yellow running on battery / RED fault.
- Server setup – linking to the WatchGas compliance software the server ID must be set up. This link will be provided upon purchase of the software.



## USE

The screen will instruct the next step. If there is a fault with the SST Dock, this will be indicated with a red-colored Dock Fault at the bottom of the screen. Press this red banner to remove the fault.



WatchGas App home screen



Press Dock Fault to remove fault

## INSERTING THE DETECTOR

### Step 1

Power on the gas detector if required. Turn on NFC.

### Step 2

Lift the lid on the SST Dock by using the two finger guides and the red latch.

### Step 3

Insert device by locating the alligator clip into the guide in the SST Dock.

### Step 4

Close the Lid until you hear the click.

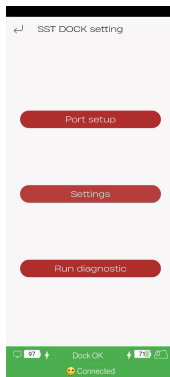
### Step 5

Select the function on the SST Dock Display that you want to carry out, bump test, calibration, or fresh air calibration. The SST Dock will then carry out the selected test.

## ACTION WHEN LID CLOSED

From the main menu, navigate to SST Dock Setting and select Settings. You can set up what the SST Dock is going to automatically do to the device inside once you close the lid. The following actions are available:

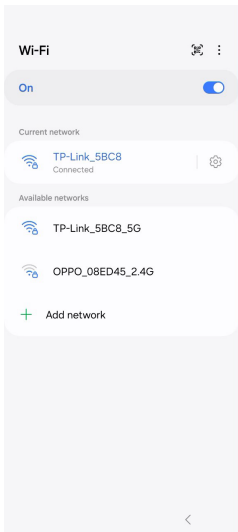
- Always ask (open dialog with calibration, bump, and zero)
- Fresh air calibration
- Bump
- Calibration





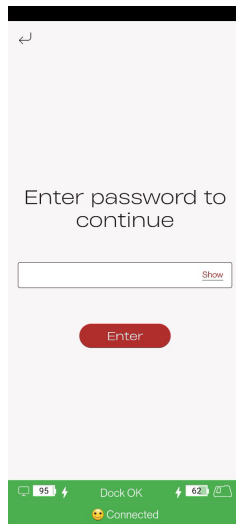
## SST DOCK WIFI

From the main menu, select Wi-Fi settings. This is where you can choose which Wi-Fi network to connect to.





## SST DOCK EXIT KIOSK

To exit the Kiosk mode on your SST Dock, select Exit Kiosk mode from the main menu. Enter password "2017" and press Enter.



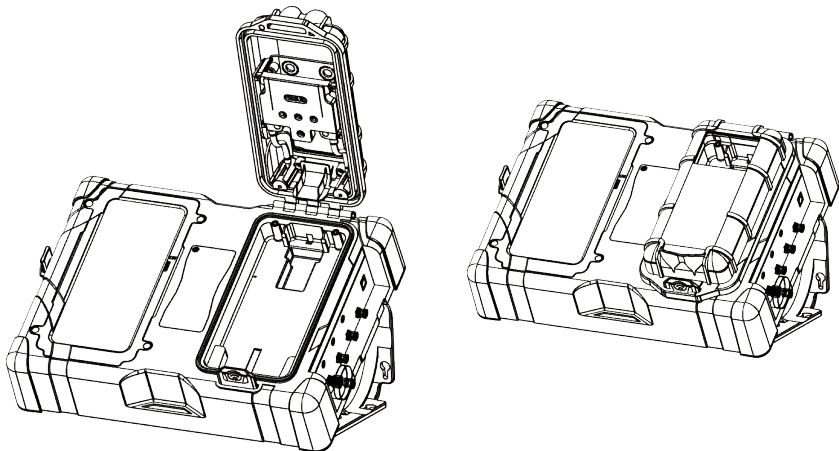
# SPECIFICATIONS

<b>Dimensions (LxWxH)</b>	28 x 21 x 10 cm / 11.5 x 8.5 x 4.5 in
<b>Weight</b>	1.8 kg / 4 lbs
<b>Operating Temperature</b>	+5-40 °C / 40-104°F
<b>Humidity</b>	10% to 90% RH
<b>Storage Temperature</b>	0-50 °C / 32-120°F
<b>Power Supply</b>	12 V  1.5 A L.P.S. 
<b>Real Time Clock</b>	Yes, updateable
<b>Data Storage</b>	More than 1 year of operation
<b>Connection capability</b>	Wi-Fi, Cellular, BLE – Connected into the Cloud and WatchGas App
<b>Gas Inlets</b>	Fresh air inlet, 2 Gas inlets and one purge
<b>Testing Function</b>	Bump Test, Calibration (optional), Device Configuration and Data Download. Also tests device Alarms, Visual LED's and Vibrator
<b>Device Compatibility</b>	One module compatible with SST Range
<b>Warranty</b>	2 Year warranty

 **WARNING**  
NO USER-SERVICEABLE PARTS INSIDE

## MAINTENANCE

Periodically check that the inlet filter is free of dirt and replace it if required. The SST Dock can be cleaned with a soft, damp cloth. Do not use solvents, soaps, polishes, or immerse the SST Dock in liquids. Completely turn off the unit and disconnect the power supply before cleaning.



 **WARNING**  
**ONLY USE ORIGINAL WATCHGAS PARTS AND / OR ACCESSORIES**

## PARTS AND ACCESSORIES

Serviceable parts and accessories are sold separately. Please contact WatchGas or an authorized distributor, or visit the website at [www.watchgas.com](http://www.watchgas.com) or [www.watchgasusa.com](http://www.watchgasusa.com) if in North America.

### **Parts list**

- WatchGas Demand Flow Regulator (PN: DFR-SS)
- WatchGas Demand Flow Regulator including pressure sensor (PN: DFR-PSV)
- PG-63 Luer (PN: SST-DOCK-LUR)
- Tubing
- Mounting brackets, spacers, and screws (PN: SST-DOCK-MB)

# TROUBLESHOOTING

## **Detector fails bump, fresh air, or calibration:**

1. If fresh air fails, verify the filter is not clogged and the air at the inlet is not contaminated.
2. Check that gas bottles are connected, sufficiently pressurized, and contain the right gas concentration (information on the bottle).
3. Verify the station function with a known functional detector.

## **Detector fails alarm test:**

1. Redo the test.
2. Manually inspect the detector for LED, vibration and audio alarms.
3. Test a known fully functional detector in the station to verify station function.

## **Station fail:**

1. Clear fault and retry.
2. Contact service representative.



## CONTACT INFORMATION

### **EMEA**

Klaverbaan 121,  
2908 KD, Capelle a/d IJssel,  
the Netherlands

[info@watchgas.com](mailto:info@watchgas.com)  
[www.watchgas.com](http://www.watchgas.com)

### **Americas**

313 N. State Hwy 342  
Red Oak, TX 75154, USA

[info@watchgasusa.com](mailto:info@watchgasusa.com)  
[www.watchgasusa.com](http://www.watchgasusa.com)

### **APAC**

Woods Square Tower 1,  
12 Woodlands Square,  
#11-71, Singapore 737715

### **ANZ**

[aus@watchgas.com](mailto:aus@watchgas.com)

SST Dock | QSG | V 1.1 | EN | 09-07-24 © 2024 **WatchGas B.V.**

WatchGas is dedicated to continuously improving its products.  
Therefore, the specifications and features mentioned in this QSG are subject to change without prior notice.